

TYRO3 Antibody
Rabbit mAb
Catalog # AP92233**Specification**

TYRO3 Antibody - Product Information

Application	WB, IHC, IP
Primary Accession	Q06418
Reactivity	Rat
Clonality	Monoclonal

Other Names

Brt; BYK; DTK; Etk-2; Rek; RSE; SKY; Tif; tyro3;

Isotype	Rabbit IgG
Host	Rabbit
Calculated MW	96905 Da

TYRO3 Antibody - Additional Information

Dilution	WB~~1:1000 IHC~~1:100~500 IP~~N/A
Purification	Affinity-chromatography
Immunogen	A synthesized peptide derived from human TYRO3
Description	May be involved in cell adhesion processes, particularly in the central nervous system. In case of filovirus infection, seems to function as a cell entry factor.
Storage Condition and Buffer	Rabbit IgG in phosphate buffered saline , pH 7.4, 150mM NaCl, 0.02% sodium azide and 50% glycerol. Store at +4°C short term. Store at -20°C long term. Avoid freeze / thaw cycle.

TYRO3 Antibody - Protein Information**Name** TYRO3**Synonyms** BYK, DTK, RSE, SKY, TIF**Function**

Receptor tyrosine kinase that transduces signals from the extracellular matrix into the cytoplasm by binding to several ligands including TULP1 or GAS6. Regulates many physiological processes including cell survival, migration and differentiation. Ligand binding at the cell surface induces dimerization and autophosphorylation of TYRO3 on its intracellular domain that provides docking sites for downstream signaling molecules. Following activation by ligand, interacts with PIK3R1 and thereby enhances PI3-kinase activity. Activates the AKT survival pathway, including nuclear

translocation of NF-kappa-B and up-regulation of transcription of NF-kappa-B-regulated genes. TYRO3 signaling plays a role in various processes such as neuron protection from excitotoxic injury, platelet aggregation and cytoskeleton reorganization. Also plays an important role in inhibition of Toll-like receptors (TLRs)-mediated innate immune response by activating STAT1, which selectively induces production of suppressors of cytokine signaling SOCS1 and SOCS3.

Cellular Location

Cell membrane; Single-pass type I membrane protein

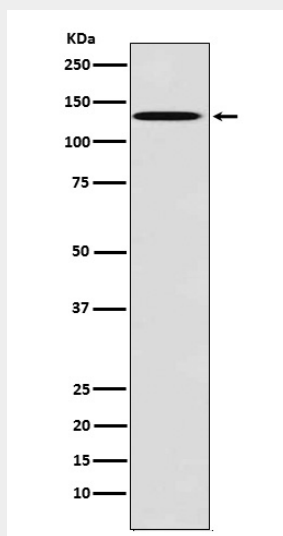
Tissue Location

Abundant in the brain and lower levels in other tissues

TYRO3 Antibody - Protocols

Provided below are standard protocols that you may find useful for product applications.

- [Western Blot](#)
- [Blocking Peptides](#)
- [Dot Blot](#)
- [Immunohistochemistry](#)
- [Immunofluorescence](#)
- [Immunoprecipitation](#)
- [Flow Cytometry](#)
- [Cell Culture](#)

TYRO3 Antibody - Images

Western blot analysis of TYRO3 expression in MCF7 cell lysate.